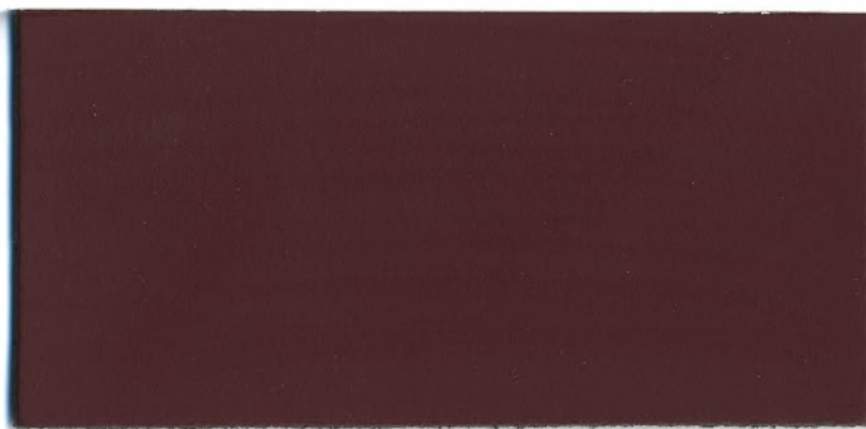


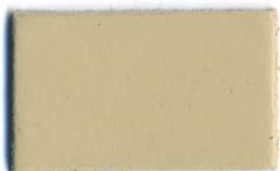
Categoria 6-D: **Cuoio ignifugo:** Vero cuoio ricavato da pelli bovine nazionali di prima qualità, conciato e tinto in botte, rifinito e verniciato. Il prodotto non contiene pentaclorofenolo amine, cromo 6 o altri prodotti chimici dannosi per la salute.

Category 6-D: **Leather flame retardant:** Real leather obtained by accurate selections of national bovines, tanned and dyed in barrel. The products do not contain pentachlorophenol, aminos, chrome 6 or any other chemical products that are harmful to health.

Catégorie 6-D: **Cuir non feu:** Cuir bovin rigoureusement sélectionné, tanné au chrome et teinté en tonneau. Les produits n'ont pas de pentachlorephenol, amines, chrome ou tout autre produit chimique toxique.



500



501



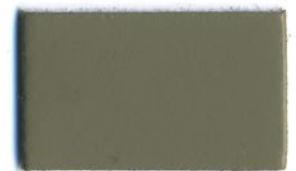
502



503



504



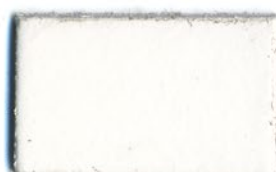
506



507



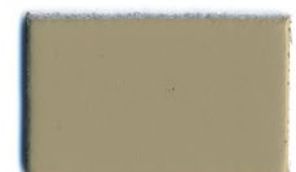
508



509



510



511